

asi 87188
PPAI 254687
SAGE 67383
UPIC SHOWDOWN

BEST SELLERS

2017



COUNSELOR
DISTRIBUTOR
CHOICE AWARDS
2017

SUPPLIER OF THE YEAR

Showdown
DISPLAYS

TABLE COVERS

Whether you're planning on flaunting your product line at a trade show or making a splash at an outdoor event, we've got you covered. Imprinted table covers let you transform any standard display table into a showcase for your brand while keeping supplies out of sight.

Suggested Product Uses

- Trade Shows
- Hotels
- Event Promotions
- Lobbies
- In-Store Samples
- Charity Events



6' Economy with full-color imprint



Covers three sides of the table with a 9" overhang in back.

ECONOMY TABLE THROWS

The open-back design of these throws gives you legroom and quick access to anything you store beneath the table.

- Draped corners
- Polyester poplin fabric
- Flame retardant treated (FR rated for exhibit halls)
- Machine-washable and wrinkle-resistant
- 24 & 48 Hour Quick Ship options available; see website for details

Economy Throws

Item #	Description	1	2-5	6-11	12-24
106002	6' Full-Color Imprint	180.00	160.00	150.00	130.00
106014	8' Full-Color Imprint	200.00	180.00	160.00	150.00
<i>Stock fabric colors imprinted with any color(s)</i>					
106010	6' Full-Bleed Dye Sublimated	265.00	240.00	225.00	210.00
106022	8' Full-Bleed Dye Sublimated	290.00	260.00	245.00	225.00
<i>White fabric dyed with any color</i>					

Description	Table Size	Imprint Graphic Size	Full-Bleed Graphic Size
6' Throws	72"W x 28"H x 30"D	50"W x 17"H	View Online Template
8' Throws	96"W x 28"H x 30"D	50"W x 17"H	View Online Template

Production Lead Time: 3 days from final proof approval



6' Standard with full-bleed dye sublimation

STANDARD TABLE THROWS

Your logo stands out on our most popular table cover.

- Covers four sides of the table
- Draped corners
- Polyester poplin fabric
- Flame retardant treated (FR rated for exhibit halls)
- Machine-washable and wrinkle-resistant
- 24 & 48 Hour Quick Ship options available; see website for details

Standard Throws

Item #	Description	1	2-5	6-11	12-24
109002	6' Full-Color Imprint	200.00	170.00	160.00	150.00
109014	8' Full-Color Imprint	220.00	190.00	180.00	160.00
<i>Stock fabric colors imprinted with any color(s)</i>					
109010	6' Full-Bleed Dye Sublimated	295.00	265.00	250.00	235.00
109022	8' Full-Bleed Dye Sublimated	315.00	285.00	270.00	250.00
<i>White fabric dyed with any color</i>					

Description	Table Size	Imprint Graphic Size	Full-Bleed Graphic Size
6' Throws	72"W x 28"H x 30"D	50"W x 17"H	View Online Template
8' Throws	96"W x 28"H x 30"D	50"W x 17"H	View Online Template

Production Lead Time: 3 days from final proof approval

FULL-COLOR IMPRINT

- Graphics can range in complexity from a simple one-color design to a more detailed full-color design
- Vector art is required
- Available in stock fabric colors only
- Slight changes in fabric color may occur from order to order due to fabric dye lot variations; this must be considered acceptable



DYE SUBLIMATION

- Ideal for complex designs, photographic images or art with gradients
- Vector and raster art accepted
- Art is dye sublimated (4-color CMYK process) on white fabric only



Setup fee: \$25.00(G); no setup fee on orders placed via our website. View current graphic templates, assembly videos and instructions on our website.



CONVERTIBLE TABLE THROWS

These throws are easily convertible to fit two of the most common table sizes.

- Hook-and-loop fasteners for easy size conversion
- Covers four sides of the table
- Polyester poplin fabric
- Flame retardant treated (FR rated for exhibit halls)
- Machine-washable and wrinkle-resistant
- 24 & 48 Hour Quick Ship options available; see website for details

Convertible Throws

Item #	Description	1	2-5	6-11	12-24
104014	6'x8' Full-Color Imprint	250.00	220.00	210.00	200.00
Stock fabric colors imprinted with any color(s)					(C)
104022	6'x8' Full-Bleed Dye Sublimated	320.00	290.00	280.00	265.00
White fabric dyed with any color					(C)

Table Size	Imprint Graphic Size	Full-Bleed Graphic Size
72"/96"W x 28"H x 30"D	50"W x 17"H	View Online Template

Production Lead Time: 3 days from final proof approval

EASY TO CONVERT!



Fold and wrap excess fabric around the sides.



Attach the corner to the back of the throw using hook-and-loop fasteners.



8' Convertible Throw with full-bleed dye sublimation transforms into 6' fitted

8' Convertible Throw with full-bleed dye sublimation

STANDARD TABLE RUNNERS

These runners can be draped over any table throw so you can add your logo or design with style.

- Available in two widths
- Polyester poplin fabric
- Flame retardant treated (FR rated for exhibit halls)
- Machine-washable and wrinkle-resistant

Standard Runners

Item #	Description	1	2-5	6-11	12-24
102002	28" Full-Color Imprint	130.00	120.00	110.00	100.00
102014	57" Full-Color Imprint	160.00	140.00	130.00	120.00
Stock fabric colors imprinted with any color(s)					
102010	28" Full-Bleed Dye Sublimated	190.00	165.00	160.00	145.00
102022	57" Full-Bleed Dye Sublimated	220.00	195.00	180.00	165.00
White fabric dyed with any color					(C)

Description	Finished Size	Imprint Graphic Size	Full-Bleed Graphic Size
28" Standard Runner	28"W x 80"H	24"W x 17"H	View Online Template
57" Standard Runner	57"W x 80"H	50"W x 17"H	View Online Template

Production Lead Time: 3 days from final proof approval



57" Table Runner with full-color imprint

28" Table Runner with full-bleed dye sublimation

Setup fee: \$25.00(G); no setup fee on orders placed via our website. View current graphic templates, assembly videos and instructions on our website.



6' Classic with full-bleed dye sublimation



Zippered back for enclosed storage area

ULTRAFIT CLASSIC TABLE THROWS

These form-fitting throws are an attractive solution for promoting your brand.

- Tight, form-fitting look
- Covers four sides of the table
- Graphic is dye sublimated on two-way stretch fabric
- Machine-washable and wrinkle-resistant
- Seams at all vertical corners
- Flame retardant treated (FR rated for exhibit halls)

UltraFit Classic Table Throws

Item #	Description	1	2-5	6-11	12-24
114002	6' Full-Bleed Dye Sublimated	460.00	440.00	430.00	410.00
114005	8' Full-Bleed Dye Sublimated	510.00	490.00	469.00	459.00

White fabric dyed with any color

(C)

Description	Table Size	Full-Bleed Graphic Size
6' Throw	72"W x 28"H x 29.75"D	View Online Template
8' Throw	96"W x 28"H x 30"D	View Online Template

Production Lead Time: 3 days from final proof approval

SIMPLE SETUP



Locate the reinforced sleeves at each corner.



Slip each leg into the sleeve to pull the throw taut.



PREMIUM TABLE THROWS

These throws are virtually wrinkle free and have an upscale look, making them perfect for showcasing eye-catching, full-color imagery.

- Covers four sides of the table
- Draped corners
- Nearly opaque material eliminates shine-through
- Graphics are dye sublimated on two-way stretch fabric
- Flame retardant treated (FR rated for exhibit halls)
- Machine-washable

Premium Table Throws

Item #	Description	1	2-5	6-11	12-24
109070	6' Full-Bleed Dye Sublimated	435.00	390.00	365.00	340.00
109071	8' Full-Bleed Dye Sublimated	460.00	410.00	385.00	360.00

White fabric dyed with any color

(C)

Description	Table Size	Full-Bleed Graphic Size
6' Throw	72"W x 28"H x 30"D	View Online Template
8' Throw	96"W x 28"H x 30"D	View Online Template

Production Lead Time: 3 days from final proof approval



ULTRAFIT CROSSOVER TABLE THROW

This stylish throw is made from two separate covers that overlap, so you can create alternate looks based on which design is on top.

Patent pending.

- Two separate full-bleed covers fit snugly over a 6' table
- Reverse the order of the covers for an alternate look
- Graphic is dye sublimated on two-way stretch fabric
- Flame retardant treated (FR rated for exhibit halls)

UltraFit Crossover Throw

Item #	Description	1	2-5	6-11	12-24
109090	6' Full-Bleed Dye Sublimated	450.00	400.00	380.00	350.00
White fabric dyed with any color					(C)

Table Size: 72"W x 28"H x 30"D
Full-Bleed Graphic Size: View Online Template

Production Lead Time: 3 days from final proof approval



Stretch both covers over the top of the table for a tight, fitted look.



ALUMINUM TABLE RUNNERS

Add a metallic sheen to your table display for a look that stands out in a crowd.

- Woven polyester with real aluminum coating
- Available in two widths
- Machine-washable

Aluminum Table Runner

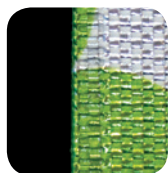
Item #	Description	1	2-5	6-11	12-24
103030	28" Full-Bleed Dye Sublimated	250.00	225.00	210.00	195.00
103031	57" Full-Bleed Dye Sublimated	295.00	265.00	250.00	230.00
Aluminum coated fabric printed with any color					(C)

Description: 28" Aluminum Runner, 57" Aluminum Runner
Finished Size: 28"W x 80"H, 57"W x 80"H
Full-Bleed Graphic Size: View Online Template, View Online Template

Production Lead Time: 3 days from final proof approval



Fabric is coated with real aluminum to create a reflective shine.



Edges are sealed with an ultrasonic welder for a clean look.



57" Runner



28" Runner

Setup fee: \$25.00(G); no setup fee on orders placed via our website. View current graphic templates, assembly videos and instructions on our website.

RETRACTABLE BANNERS

With a huge assortment of retractable banners to choose from, you're sure to find the perfect fit for your needs. Many sizes and styles are available and the RCAT rating system lets you pick a retractor based on how frequently the banner will be pulled out.

Suggested Product Uses

- Meetings
- Media Events
- Store Promotions
- Bank Counters
- Airports
- Hotel Lobbies



33.5" retractor



31.5" retractor



PROMO RETRACTORS

These classically styled displays are the most budget-friendly retractors for one-time promotional use.

- Available in two widths
- Swivel feet for stability
- Graphic is printed on tear-resistant polypropylene media
- 25 RCAT rating and three-month hardware warranty

Promo Retractors

Item #	Description	1	2-5	6-11	12-24
262230	31.5" Polypropylene Media Kit	122.75	115.40	109.31	101.96
262232	33.5" Polypropylene Media Kit	132.30	124.32	117.81	109.83
Kit Includes: Hardware, Installed Graphic and Carry Case					(C)

Description	Product Size	Finished Graphic Size
31.5" Promo Retractor	33.5"W x 82"H x 14.875"D	31.5"W x 79.5"H
33.5" Promo Retractor	35.25"W x 82"H x 14.875"D	33.5"W x 79.5"H

Production Lead Time: 2 days from final proof approval



Shock cord pole makes it easy to set up and tear down.



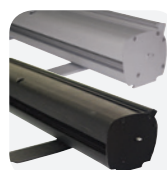
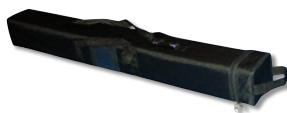
Lightweight aluminum base with plastic ends.



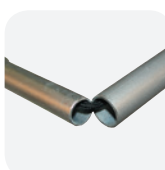
33.5" retractor



31.5" retractor



Hardware available in silver or black.



Shock cord pole makes it easy to set up and tear down.



Eye-catching, aluminum-coated fabric. Call for sample.

ECONOMY RETRACTORS

These popular Economy Retractors come in a variety of sizes and styles to accommodate a wide range of uses.

- Double-footed design for stability
- Lightweight aluminum base
- Graphic available on aluminum-coated fabric, no curl opaque fabric or no curl hybrid film
- Additional sizes available online
- 100 RCAT rating and one-year hardware warranty

Economy Retractors

Item #	Description	1	2-5	6-11	12-24
261134	31.5" No Curl Hybrid Film Kit	243.80	226.55	217.35	208.15
262162	31.5" No Curl Opaque Fabric Kit	243.80	226.55	217.35	208.15
262168	31.5" Aluminum Fabric Kit	243.80	226.55	217.35	208.15
261136	33.5" No Curl Hybrid Film Kit	261.60	247.20	230.40	216.00
262163	33.5" No Curl Opaque Fabric Kit	261.60	247.20	230.40	216.00
262169	33.5" Aluminum Fabric Kit	261.60	247.20	230.40	216.00
Kit Includes: Hardware, Installed Graphic and Carry Case					(C)

Description	Product Size	Finished Graphic Size
31.5" Economy Retractor	32"W x 83"H x 15"D	31.5"W x 78.5"H
33.5" Economy Retractor	34"W x 83"H x 15"D	33.5"W x 78.5"H

Production Lead Time: 2-4 days from final proof approval

Setup fee: \$25.00(G); no setup fee on orders placed via our website. View current graphic templates, assembly videos and instructions on our website.



ECONOMY PLUS RETRACTORS

These displays are as reliable as the popular Economy Retractors, but they include some great additional features like improved durability.

- Available in two widths
- Single-footed design maintains stability
- Heavy-duty aluminum base
- Graphic available on aluminum-coated fabric, no curl opaque fabric or no curl hybrid film
- 150 RCAT rating and two-year hardware warranty

Economy Plus Retractors

Item #	Description	1	2-5	6-11	12-24
261012	31.5" No Curl Hybrid Film Kit	277.15	256.45	244.95	234.60
262180	31.5" No Curl Opaque Fabric Kit	277.15	256.45	244.95	234.60
262182	31.5" Aluminum Fabric Kit	277.15	256.45	244.95	234.60
261002	33.5" No Curl Hybrid Film Kit	300.00	282.00	265.20	247.20
262181	33.5" No Curl Opaque Fabric Kit	300.00	282.00	265.20	247.20
262183	33.5" Aluminum Fabric Kit	300.00	282.00	265.20	247.20

Kit Includes: Hardware, Installed Graphic and Carry Case (C)

Description	Product Size	Finished Graphic Size
31.5" Economy Plus Retractor	32"W x 62"-82.5"H x 15"D	31.5"W x 58"-78.5"H
33.5" Economy Plus Retractor	34"W x 62"-82.5"H x 15"D	33.5"W x 58"-78.5"H

Production Lead Time: 2-4 days from final proof approval



33.5" retractor



31.5" retractor

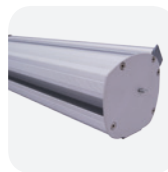
Adjustable Graphic: 58"-78.5"H"



Banner rail easily attaches to the top of the pole for quick setup.



Flip-lever telescoping pole makes setup and adjustment simple.



Hardware available in silver.



Eye-catching, aluminum-coated fabric. Call for sample.

MINI RETRACTORS

These mini retractors can be used even when space is limited, and they work great as tabletop displays.

- Aluminum base
- Graphic is printed on tear-resistant polypropylene media

Mini Retractors

Item #	Description	1	2-5	6-11	12-24
262014	Deluxe Mini Polypropylene Media Kit	53.00	51.75	50.75	49.50
210240	Small Mini Promo Polypropylene Media Kit	41.00	39.00	37.50	36.00
210242	Large Mini Promo Polypropylene Media Kit	46.00	43.50	42.50	40.50

Kit Includes: Hardware and Installed Graphic (C)

Description	Product Size	Finished Graphic Size
Deluxe Mini Retractor	9.375"W x 17.75"H x 4"D	8.25"W x 16"H
Small Mini Promo Retractor	9.625"W x 13.25"H x 3"D	8.25"W x 11.25"H
Large Mini Promo Retractor	13.125"W x 17.875"H x 3"D	11.75"W x 16.5"H

Production Lead Time: 2 days from final proof approval



Deluxe Mini Retractor

Small Mini Promo Retractor

Large Mini Promo Retractor

Setup fee: \$25.00(G); no setup fee on orders placed via our website. View current graphic templates, assembly videos and instructions on our website.

Adjustable Graphic: 31.5" - 78"H



SUPERB RETRACTOR

With interchangeable graphic rollers, swapping your message is easy.

- Durable construction makes this a long-lasting option
- Graphic available on reflective media or no curl hybrid film
- 800 RCAT rating and lifetime hardware warranty

Superb Retractor

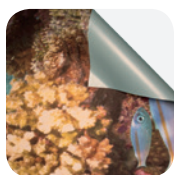
Item #	Description	1	2-5	6-11	12-24
261118	No Curl Hybrid Film Kit	386.40	372.60	343.85	332.35
261120	Reflective Media Kit	397.90	384.10	354.20	342.70

Kit Includes: Hardware, Installed Graphic and Carry Case

(C)

Description	Product Size	Finished Graphic Size
Superb Retractor	35.5"W x 37"-80.5"H x 7.75"D	33.5"W x 31.5"-78"H

Production Lead Time: 2 days from final proof approval



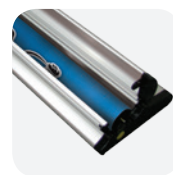
Reflective media creates a striking appearance when hit by direct light. Call for sample.



Low-profile base is available with black or silver end caps.



Flip-lever telescoping pole makes setup and adjustment simple.



Easy flip-open base and removable graphic rollers allow for frequent graphic changes.

Adjustable Graphic: 61.5" - 79.5"H



46.5" double retractor

33.5" single retractor



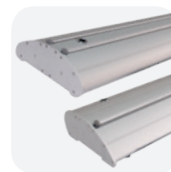
Eye-catching, aluminum-coated fabric. Call for sample.



Flip-lever telescoping pole makes setup and adjustment simple.



Banner attaches with hook-and-loop fasteners so swapping out graphics is easy.



Streamlined base is available in single- and double-banner options.

DELUXE PRO RETRACTORS

This durable retractor has an upscale look and comes in both single-banner and double-banner versions.

- Durable aluminum base
- Stands up to frequent use
- Banner can be swapped out for easy graphic changes
- Graphic available on aluminum-coated fabric or no curl opaque fabric
- 200 RCAT rating and one-year hardware warranty

Deluxe Pro Retractors

Item #	Description	1	2-5	6-11	12-24
262250	33.5" Single No Curl Opaque Fabric Kit	306.00	288.00	272.40	253.20
262184	33.5" Single Aluminum Fabric Kit	306.00	288.00	272.40	253.20
262251	33.5" Double No Curl Opaque Fabric Kit	446.20	435.85	394.45	382.95
262185	33.5" Double Aluminum Fabric Kit	446.20	435.85	394.45	382.95
262254	46.5" Single No Curl Opaque Fabric Kit	341.00	321.00	304.00	284.00
262186	46.5" Single Aluminum Fabric Kit	341.00	321.00	304.00	284.00
262255	46.5" Double No Curl Opaque Fabric Kit	531.30	517.65	471.45	457.80
262187	46.5" Double Aluminum Fabric Kit	531.30	517.65	471.45	457.80

Kit Includes: Hardware, Installed Graphic(s) and Carry Case

(C)

Description	Product Size (Single / Double)	Finished Graphic Size
33.5" Deluxe Pro Retractor	34.75"W x 65.25"-83.25"H x 8.5"D / 9.125"D	33.5"W x 61.5"-79.5"H
46.5" Deluxe Pro Retractor	48.5"W x 65.25"-83.25"H x 8.5"D / 9.125"D	46.5"W x 61.5"-79.5"H

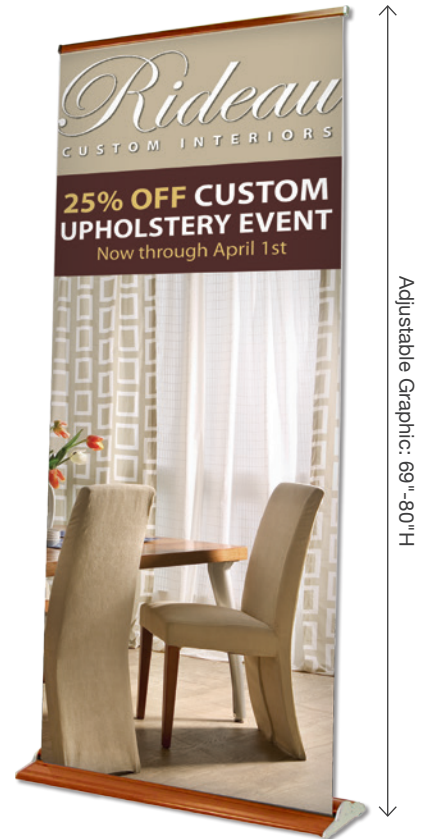
Production Lead Time: 2-4 days from final proof approval

Setup fee: \$25.00(G); no setup fee on orders placed via our website. View current graphic templates, assembly videos and instructions on our website.

CHANGE AGENT RETRACTORS

These retractable banners feature fabric graphics for a professional look.

- Graphic available on aluminum-coated fabric or no curl opaque fabric
- Banner can be swapped out for easy graphic changes
- Additional sizes available online
- 300 RCAT rating and one-year hardware warranty



Adjustable Graphic: 69"-80"H

Change Agent Retractor

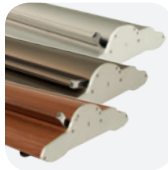
Item #	Description	1	2-5	6-11	12-24
263210	36" Woodgrain No Curl Opaque Fabric Kit	345.40	324.50	307.67	286.88
262222	36" Woodgrain Aluminum Fabric Kit	345.40	324.50	307.67	286.88
263204	36" Champagne / Silver No Curl Opaque Fabric Kit	328.90	309.35	292.91	273.47
262225	36" Champagne / Silver Aluminum Fabric Kit	328.90	309.35	292.91	273.47

Kit Includes: Hardware, Installed Graphic and Carry Case

(C)

Description	Product Size	Finished Graphic Size
36" Change Agent Retractor	37.5"W x 72"-83"H x 9.5"D	36"W x 69"-80"H

Production Lead Time: 2-4 days from final proof approval



Base available in silver, champagne or woodgrain with aluminum end caps.



Twist-lock telescoping pole makes setup and adjustment simple.



Banner attaches with hook-and-loop fasteners so swapping out graphics is easy.



Eye-catching, aluminum-coated fabric. Call for sample.

JUMBO WIDE RETRACTORS

Create an impressive backdrop with these wide retractable banners.

- Available in 5', 6' and 8' widths
- High-tension base springs keep the banner taut
- Double-footed design for stability
- Graphic available on no curl fabric or 13 oz. smooth vinyl
- 100 RCAT rating and one-year hardware warranty

Jumbo Wide Retractors

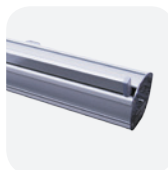
Item #	Description	1	2-5	6-11	12-24
262138	5' No Curl Fabric Kit	509.00	495.00	472.00	454.00
261080	5' 13 oz. Smooth Vinyl Kit	509.00	495.00	472.00	454.00
262139	6' No Curl Fabric Kit	614.00	592.00	570.00	543.00
261082	6' 13 oz. Smooth Vinyl Kit	614.00	592.00	570.00	543.00
262140	8' No Curl Fabric Kit	719.00	696.00	668.00	645.00
261018	8' 13 oz. Smooth Vinyl Kit	719.00	696.00	668.00	645.00

Kit Includes: Hardware, Installed Graphic and Carry Case

(C)

Description	Product Size	Finished Graphic Size
5' Jumbo Wide Retractor	60.375"W x 83"H x 15.75"D	59.75"W x 78.75"H
6' Jumbo Wide Retractor	72.375"W x 83"H x 15.75"D	71.75"W x 78.75"H
8' Jumbo Wide Retractor	95.5"W x 83"H x 15.75"D	94.75"W x 78.75"H

Production Lead Time: 2-4 days from final proof approval



Hardware comes in silver.



Two shock cord poles support the banner.



6' retractor

5' retractor

8' retractor

Setup fee: \$25.00(G); no setup fee on orders placed via our website. View current graphic templates, assembly videos and instructions on our website.

BANNER DISPLAYS

We carry some of the lightest and most cost-effective displays in the industry, all of which are portable and easy to set up. Choose from a variety of short-term and long-term options.

Suggested Product Uses

- Banks
- Lobbies
- Restaurants
- Tournaments
- Craft Shows
- Jewelry Stores



FRAMEWORX BANNER DISPLAYS

These lightweight displays feature a contemporary design that looks great in any environment.

- Small footprint for use in narrow spaces
- Durable hardware design can display a variety of media types
- Each tension corner spring features two hooks so you can create a double-sided display by adding a second banner (second banner sold separately)
- Easy-to-change graphics
- Available in two sizes
- Aluminum fabric, reflective media and no curl opaque fabric graphic material options available online (production lead times vary)

FrameWorx Banner Displays

Item #	Description	1	2-5	6-11	12-24
263061	23.5" x 67" H 13 oz. Smooth Vinyl Single-Sided Kit	125.00	117.50	111.30	103.80
263062	23.5" x 67" H 13 oz. Smooth Vinyl Double-Sided Kit	150.00	141.00	133.50	124.50
263070	27.5" x 75" H 13 oz. Smooth Vinyl Single-Sided Kit	140.00	131.60	124.60	116.20
263071	27.5" x 75" H 13 oz. Smooth Vinyl Double-Sided Kit	165.00	155.10	146.90	137.00

Kit Includes: Hardware, (1) Graphic and Carry Case

(C)

Description	Product Size	Finished Graphic Size
23.5" x 67" FrameWorx Display	36.75"W x 74"H x 15.25"D	23.5"W x 67"H
27.5" x 75" FrameWorx Display	41"W x 81.75"H x 15.25"D	27.5"W x 75"H

Production Lead Time: 2 days from final proof approval



Banner attaches using low-profile clear grommets.



Tension corner springs keep the banner centered and offer tool-free installation.



Fold-out legs keep the display stable.



TAURUS BANNER DISPLAY

This lightweight display features sturdy, aluminum bottom legs and removable plastic top arms that are easy to set up.

- Compact gear hub
- Graphic is printed on 13 oz. smooth vinyl
- Banner can be customized with nickel or clear plastic grommets by request

Taurus Banner Display

Item #	Description	1	2-5	6-11	12-24
210124	Kit	160.00	155.00	150.00	145.00

Kit Includes: Hardware, Graphic and Carry Case

(C)

Description	Product Size	Finished Graphic Size
Taurus Display	40"W x 75"H x 14"D	40"W x 75"H

Production Lead Time: 2 days from final proof approval



Lightweight plastic hub offers push-button arm adjustment.



Corner grommets attach to plastic hooks on display legs.

Setup fee: \$25.00(G); no setup fee on orders placed via our website. View current graphic templates, assembly videos and instructions on our website.

EVERYDAY BANNER DISPLAYS

These displays feature durable steel frames with a long-lasting, powder-coated finish and can hold one or two banners for multiple applications.

- The Everyday Banner Display is the standard version of this display, featuring pole pockets and dowels to hold the banner in place
- The Everyday Heavy-Duty Banner Display has all the same features as the Everyday Banner Display, only with a stronger, thicker frame and wider base
- The Everyday Snap Rail Banner Display replaces the dowel and pole pockets with snap rails for a clean finish

Everyday Banner Displays

Item #	Description	1	2-5	6-11	12-24
210265	Everyday Kit	170.00	165.00	160.00	155.00
210226	Everyday Heavy-Duty Kit	194.00	191.00	188.00	184.00
Kit Includes: Hardware, (1) 24"W x 72"H Graphic and (2) 24" Dowels					(C)

Everyday Snap Rail Banner Displays

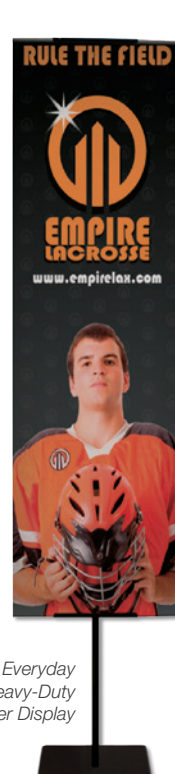
Item #	Description	1	2-5	6-11	12-24
264030	24" Kit	185.00	180.00	175.00	170.00
264032	30" Kit	195.00	190.00	185.00	175.00
24" Kit Includes: Hardware* and (1) 24"W x 72"H Graphic					(C)
30" Kit Includes: Hardware* and (1) 30"W x 72"H Graphic					
*Hardware includes (4) snap rails for single- or double-sided use					

Description	Product Size	Finished Graphic Size
Everyday Banner Display	24"W x 48"-92"H x 13"D	12"-36"W x 12"-91"H
Everyday Heavy-Duty Banner Display	24"W x 55"-105"H x 14"D	12"-36"W x 12"-104"H
24" Everyday Snap Rail Display	24"W x 48"-92"H x 13.25"D	24"W x 12"-92"H
30" Everyday Snap Rail Display	30"W x 48"-92"H x 13.25"D	30"W x 12"-92"H

Production Lead Time: 2 days from final proof approval



Everyday Banner Display with silver hardware



Everyday Heavy-Duty Banner Display



Everyday Snap Rail Banner Display with two graphics

Adjustable Height: 12"-104"H

Adjustable Height: 12"-91"H



Hardware available in silver or black (Heavy-Duty and Snap Rail kits only available in black).



Telescoping pole with thumbscrew lets you adjust the hardware for custom banner sizes.



Each display can hold one or two banners.



Snap Rail kit offers easy graphic installation; just slide the banner into the snap rail and clamp shut.

EUROFIT BANNER DISPLAYS

A stretch fabric graphic slides over a tubed frame, letting you create amazing backdrops or portable privacy walls.

- Multiple sizes can be arranged together for endless display possibilities
- Graphic is dye sublimated on two-way stretch fabric
- Steel base with black powder-coated finish

EuroFit Banner Displays

Item #	Description	1	2-5	6-11	12-24
255110	2' Kit	200.00	194.30	187.60	181.90
255113	3' Kit	275.00	267.00	259.00	250.00
255116	4' Kit	365.00	357.00	343.00	335.00
255119	5' Kit	415.00	406.00	393.00	384.00
Kit Includes: Frame, (1) EuroFit Connector, Graphic and Carry Case					(C)

Description	Product Size	Finished Graphic Size
2' EuroFit Banner Display	25.625"W x 91"H x 9.875"D	View Online Template
3' EuroFit Banner Display	37.625"W x 91"H x 9.875"D	View Online Template
4' EuroFit Banner Display	48.875"W x 91"H x 9.875"D	View Online Template
5' EuroFit Banner Display	60.875"W x 91"H x 9.875"D	View Online Template

Production Lead Time: 4 days from final proof approval



3' Display



5' Display



4' Display



Plastic hinge connector included for pairing with other EuroFit displays (see page 25 for details).



Graphic slides easily over the frame for quick setup.



Plastic feet elevate the base and keep the display stable.

2' Display



Setup fee: \$25.00(G); no setup fee on orders placed via our website. View current graphic templates, assembly videos and instructions on our website.

BANNERS & FLAGS

With high-quality, full-color print options available across a variety of sizes and materials, our wide selection of banners make promotions a breeze.

POPULAR VINYL FINISHING STYLES

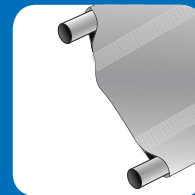
Additional finishing styles and details available online!



Heat Weld Hem
& Grommets



Heat Weld Hem,
Rope & Grommets



Heat Weld &
3" Pole Pockets



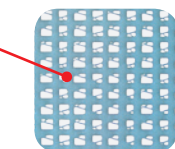
10 oz. Vinyl Banner



13 oz. Vinyl Banner



18 oz. Vinyl Banner



9 oz. Mesh Vinyl Banner



The 10 oz. Vinyl Single-Sided Banner is light-duty for indoor or short-term outdoor use.

10 oz. Vinyl Single-Sided Banners

Item #	Size	1-2	3-7	8-22	23-49
304245	2' x 4'	25.60	24.00	22.40	20.80
Item #	Size	1	2-3	4-9	10-22
304252	3' x 6'	57.60	54.00	50.40	46.80
Item #	Size	1-2	3-7	8-16	17-33
304255	4' x 6'	72.00	67.20	62.40	55.92

(C)

Production Lead Time: 2 days from final proof approval

Versatile enough for both indoor and outdoor use, the 13 oz. Vinyl Single-Sided Banner is a top choice when it comes to value.

13 oz. Vinyl Single-Sided Banners

Item #	Size	1-2	3-7	8-22	23-49
304360	2' x 4'	27.20	24.80	22.40	20.80
Item #	Size	1	2-3	4-9	10-22
304364	3' x 6'	61.20	55.80	50.40	46.80
Item #	Size	1	2-5	6-12	13-24
304367	4' x 8'	99.20	89.60	83.20	74.56

(C)

Production Lead Time: 2 days from final proof approval

The 18 oz. Vinyl Single-Sided Banner is extremely durable, ideal for long-term outdoor use.

18 oz. Vinyl Single-Sided Banners

Item #	Size	1	2-3	4-9	10-22
304384	3' x 6'	69.30	63.90	58.50	54.00
Item #	Size	1	2-5	6-12	13-24
304387	4' x 8'	113.60	104.00	96.00	87.04
Item #	Size	1	2-4	5-9	10-19
304388	4' x 10'	142.00	130.00	120.00	108.80

(C)

Production Lead Time: 2 days from final proof approval

Ideal for long-term outdoor use, the 9 oz. Single-Sided Mesh Banner is made of breathable material that can be used on breezy days.

9 oz. Mesh Vinyl Single-Sided Banners

Item #	Size	1	2-4	5-14	15-33
304411	2' x 6'	46.20	42.60	39.00	36.00
Item #	Size	1	2-3	4-9	10-22
304414	3' x 6'	69.30	63.90	58.50	54.00
Item #	Size	1	2-5	6-12	13-24
304417	4' x 8'	113.60	104.00	96.00	87.04

(C)

Production Lead Time: 2 days from final proof approval

Setup fee: \$25.00(G); no setup fee on orders placed via our website. View current graphic templates, assembly videos and instructions on our website.

POPULAR FABRIC FINISHING STYLES

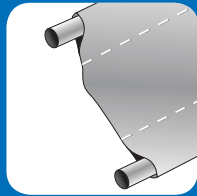
Additional finishing styles and details available online!



Sewn Hem Only



Sewn Hem & Grommets



3" Pole Pockets

Super Poly Knit Single-Sided Banners allow wind to pass through, making them great for outdoor use.

Super Poly Knit Single-Sided Banners

Item #	Size	1-2	3-7	8-22	23-49
304420	2' x 4'	60.00	53.60	48.00	43.20
Item #	Size	1	2-3	4-9	10-22
304424	3' x 6'	135.00	120.60	108.00	97.20
Item #	Size	1	2-5	6-12	13-24
304427	4' x 8'	214.40	192.00	172.80	152.00

(C)

Production Lead Time: 4 days from final proof approval



Super Poly Knit Fabric Banner

Aluminum Single-Sided Banners can be used indoors or out.

Aluminum Single-Sided Banners

Item #	Size	1-2	3-7	8-22	23-49
304760	2' x 4'	48.00	44.80	42.40	40.80
Item #	Size	1	2-3	4-9	10-22
304762	3' x 6'	108.00	100.80	95.40	91.80
Item #	Size	1	2-5	6-12	13-24
304765	4' x 8'	179.20	169.60	163.20	156.80

(C)

Production Lead Time: 4 days from final proof approval



Aluminum Fabric Banners



QUICK & EASY ONLINE BANNER ORDERING!

Visit our website for accurate quotes and hassle-free banner ordering 24/7!



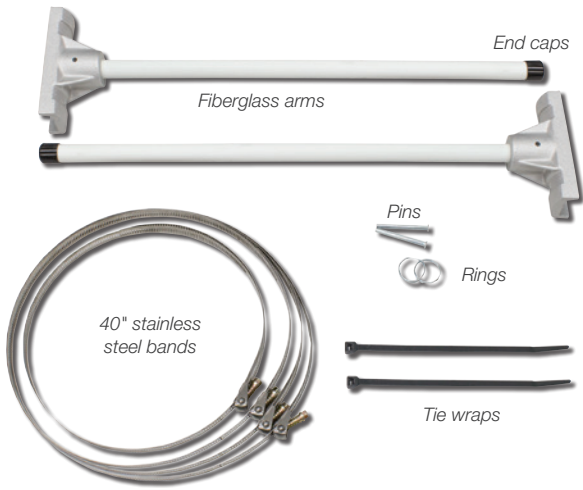
EASY ONLINE ORDERS

- Accurate Quoting
- Large Quantities
- Additional Finishing Styles
- Custom Sizes



Setup fee: \$25.00(G); no setup fee on orders placed via our website. View current graphic templates, assembly videos and instructions on our website.

www.showdowndisplays.com • asi 87188 • PPAI 254687 • SAGE 67383



Single
Includes top and bottom brackets for one banner.



Double
Includes top and bottom brackets for two banners.

VERSATILE BRACKET SYSTEM

Designed to be adaptable, this bracket system fits almost any wood or steel pole.

- Rust-free cast aluminum with fiberglass arms
- Stainless steel bands hold bracket in place
- Works with square, round and polygonal poles
- 1° incline keeps banner taut
- Accepts banners up to 24 sq. ft. in size
- Banners sold separately (see page 15)

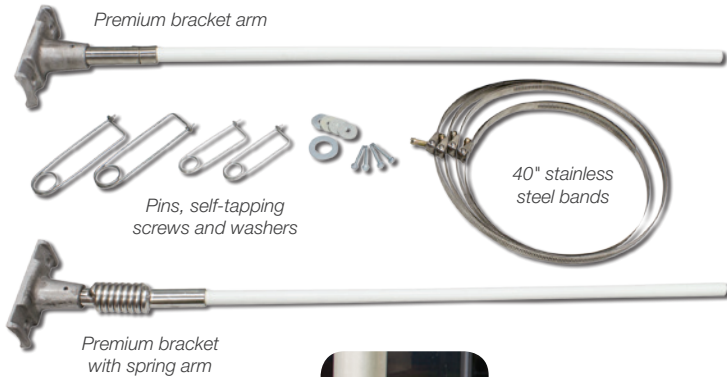
Versatile Bracket System

Item #	Description	1-9	10-24	25-49	50-99
302020	18" Single	87.00	82.00	72.00	67.00
302006	24" Single	88.00	84.00	79.00	76.00
302008	30" Single	92.00	87.00	82.00	78.00
302021	18" Double	143.00	138.00	128.00	123.00
302007	24" Double	148.00	143.00	133.00	128.00
302009	30" Double	158.00	148.00	138.00	133.00

Hardware only. Banner sold separately (see page 15).

(C)

Production Lead Time: Hardware only ships same day when order is placed by 2pm CST



The spring arm has a 1° incline to keep banners taut and easily snaps back into place after graphic changes.

PREMIUM & SPRING BRACKET SYSTEM

This bracket system is built to withstand the harshest outdoor elements without rusting. Patent #6378820

- Premium Single includes two Premium arms (one top, one bottom)
- Premium Double includes four Premium arms (two top, two bottom)
- Premium Single w/Spring Arm includes one top Premium arm and one bottom spring arm
- Premium Double w/Spring Arm includes two top Premium arms and two bottom spring arms
- Banners sold separately (see page 15)

Premium & Spring Bracket System

Item #	Description	1	2-5	6-11	12-24
302060	30" Single Premium Bracket System	112.00	107.00	102.00	97.00
302061	30" Double Premium Bracket System	189.00	184.00	179.00	174.00
302062	30" Single Premium Bracket System with Spring Arm	141.00	140.00	136.00	131.00
302063	30" Double Premium Bracket System with Spring Arm	240.00	235.00	230.00	225.00

Hardware only. Banner sold separately (see page 15).

(C)

Production Lead Time: Hardware only ships same day when order is placed by 2pm CST



Triangular Boulevard Banner and Versatile Bracket System



S-Shaped Boulevard Banner and Versatile Bracket System

SHAPED BOULEVARD BANNERS & BRACKETS

Designed to withstand the elements, these classic boulevard banners are perfect for long-term outdoor use.

- Double-sided 18 oz. opaque vinyl
- Available in a variety of shapes and sizes

Versatile Bracket System for Triangular Boulevard Banners

Item #	Description	1	2-5	6-11	12-24
302070	24" Triangular Single	75.00	71.00	68.00	64.00
302071	24" Triangular Double	120.00	114.00	108.00	102.00
302072	30" Triangular Single	80.00	76.00	72.00	68.00
302073	30" Triangular Double	125.00	119.00	113.00	106.00

Hardware only. For use with Triangular Banners only (sold separately).

(C)

Versatile Bracket System for S-Shaped Boulevard Banners

Item #	Description	1	2-5	6-11	12-24
302074	18" and 24" S-Shaped Single	87.00	83.00	78.00	74.00
302075	18" and 24" S-Shaped Double	145.00	138.00	131.00	123.00
302076	24" and 30" S-Shaped Single	90.00	86.00	81.00	77.00
302077	24" and 30" S-Shaped Double	160.00	150.40	142.40	132.80

Hardware only. For use with S-Shaped Banners only (sold separately).

(C)

18 oz. Opaque Vinyl Triangle & S-Shaped Boulevard Banners

Item #	Description	1	2-5	6-11	12-24
302053	24" x 48" Double-Sided Triangular	63.00	60.00	57.00	54.00
302055	30" X 60" Double-Sided Triangular	82.00	77.10	73.00	68.10
302057	24" x 48" Double-Sided S-Shaped	66.00	63.00	59.00	56.00
302059	30" X 60" Double-Sided S-Shaped	87.00	83.00	78.00	74.00

Banner only. Shape-specific hardware sold separately.

(C)

Production Lead Time: 2 days from final proof approval

Hardware only ships same day when order is placed by 2pm CST

VINYL BOULEVARD BANNERS

These vibrantly printed, double-sided boulevard banners will be the talk of the town.

- Strong 18 oz. opaque vinyl
- Finished with 3" pole pockets on top and bottom and two grommets along one edge of the banner
- Hardware sold separately (see page 14)
- More options available online

18 oz. Opaque Vinyl Rectangular Boulevard Banners

Item #	Description	1-6	7-13	14-39	40-89
302031	18" x 36" Double-Sided	23.40	21.90	20.40	19.20
Item #	Description	1-3	4-9	10-29	30-66
302035	24" x 36" Double-Sided	46.80	43.80	40.80	38.40
Item #	Description	1-2	3-7	8-22	23-49
302037	24" x 48" Double-Sided	62.40	58.40	54.40	51.20
Item #	Description	1	2-5	6-17	18-39
302039	24" x 60" Double-Sided	78.00	73.00	68.00	64.00
Item #	Description	1	2-4	5-14	15-33
302041	24" x 72" Double-Sided	93.60	87.60	81.60	76.80
Item #	Description	1	2-4	5-14	15-31
302045	30" x 60" Double-Sided	97.50	91.25	85.00	80.00

Banner only. Hardware sold separately (see page 14).

(C)

Production Lead Time: 2 days from final proof approval



FABRIC BOULEVARD BANNERS

High-quality fabric banners lend an upscale flair to any street or parking lot.

- 600 denier nylon fabric
- Two-sided with blackout liner
- 3" pole pockets on top and bottom
- Two grommets along one edge of the banner
- Hardware sold separately (see page 14)
- Custom sizes available (call for quote)

600 Denier Nylon Rectangular Boulevard Banners

Item #	Description	1	2-5	6-11	12-24
302078	18" x 36" Double-Sided	135.00	132.00	130.00	127.00
302080	24" x 36" Double-Sided	150.00	147.00	144.00	141.00
302081	24" x 48" Double-Sided	155.00	152.00	149.00	146.00
302082	24" x 60" Double-Sided	165.00	162.00	158.00	155.00
302083	24" x 72" Double-Sided	175.00	172.00	168.00	165.00
302085	30" x 60" Double-Sided	200.00	196.00	192.00	188.00

Banner only. Hardware sold separately (see page 14).

(C)

Production Lead Time: 7 days from final proof approval



FABRIC FLAGS

Easy to hang, these flags work with any standard flag pole.

- Great for indoor or outdoor use
- Single-sided or double-sided options available
- Graphic is dye sublimated on super poly knit fabric
- Custom sizes available (call for quote)

Full-Color Dye Sublimation Flags

Item #	Size	1	2-5	6-11	12-24
300003	2' x 3' Flag Single-Sided	95.00	90.00	85.00	80.00
300018	2' x 3' Flag Double-Sided	150.00	145.00	140.00	135.00
300007	3' x 5' Flag Single-Sided	138.00	133.00	123.00	112.00
300019	3' x 5' Flag Double-Sided	200.00	195.00	185.00	175.00
300011	4' x 6' Flag Single-Sided	180.00	175.00	165.00	155.00
300020	4' x 6' Flag Double-Sided	240.00	235.00	225.00	215.00
300015	5' x 8' Flag Single-Sided	210.00	205.00	195.00	185.00
300021	5' x 8' Flag Double-Sided	285.00	280.00	270.00	260.00

Production Lead Time: 4 days from final proof approval

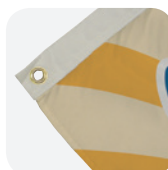
(C)



5' x 8' Flag



4' x 6' Flag



All flags are finished with canvas heading and brass grommets.



Front - Correct

Back - Reverse

Single-sided flags are printed on one side; reverse image is visible through the back of the flag.

SAIL SIGN FLAGS

These signs flutter in the breeze to grab the attention of anyone who passes by.

- Sizes range from 6' to 17' tall
- Carbon composite poles are strong and flexible
- Graphic is dye sublimated on super poly knit flag fabric
- 24 & 48 Hour Quick Ship options available; see website for details



Value Sail Sign Flags



- Dye-sublimated graphics
- Pole pocket is made of the same super poly knit fabric as the flag
- Value Hardware with value spike or value cross base; covered by 90-day warranty



Streamline Sail Sign Flags



- Dye-sublimated graphics
- Pole pocket is made of the same super poly knit fabric as the flag
- Premium Hardware with spike, scissor base or three-legged base; covered by lifetime warranty



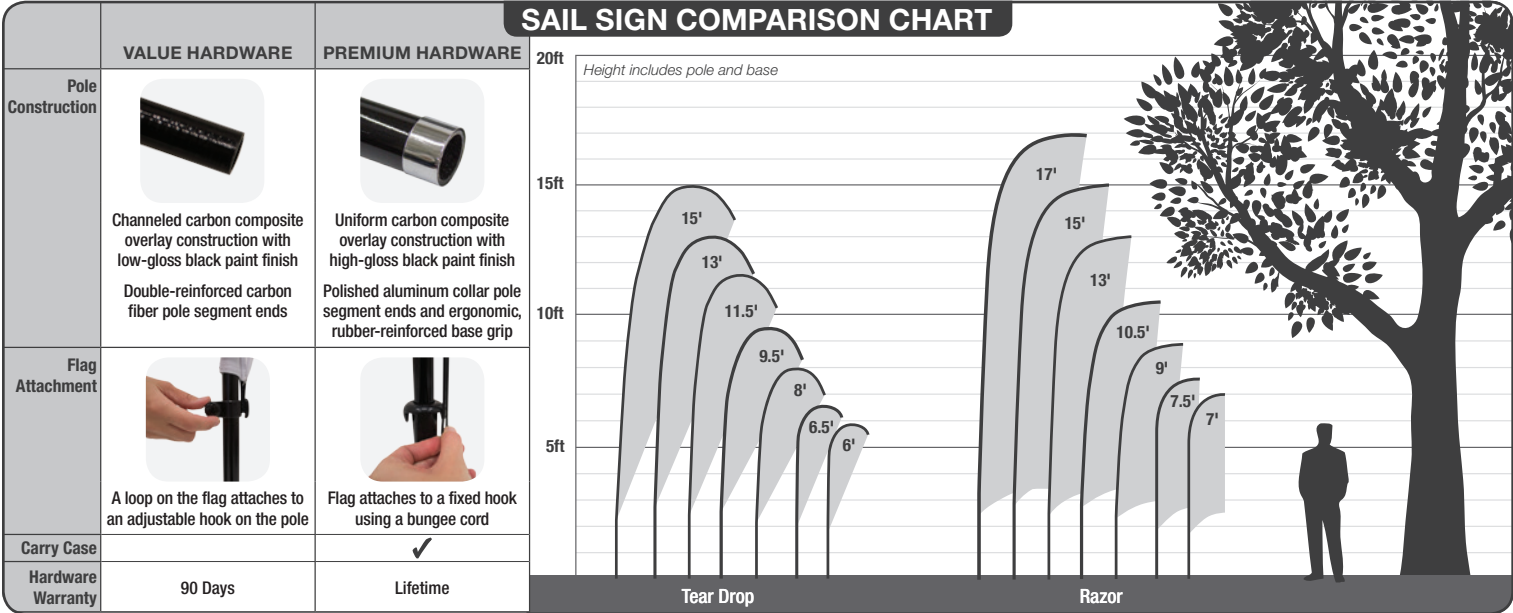
Premium Sail Sign Flags



- Dye-sublimated graphics
- Super poly knit fabric with polypropylene webbing pole pockets
- Premium Hardware with spike, scissor base or three-legged base; covered by lifetime warranty

Suggested Product Uses

- Zoos
- Museums
- Golf Courses
- Sporting Events
- Trade Shows
- Car Dealerships



Wind Test Assessment:
6'-11' to withstand winds up to 30 mph with use of water ballast or a ground stake in firm ground.
13'-17' to withstand winds up to 20 mph with use of water ballast or a ground stake in firm ground.
Flag Warranty: Flags used outdoors have a 90-day warranty. Flags used indoors have a one-year warranty.

Disclaimer: Wind rating conducted in a controlled environment. Outdoor products should be taken down if bad weather is likely. Wind gusts and heavy rain could reduce the wind resistance of these products.

Setup fee: \$25.00(G); no setup fee on orders placed via our website. View current graphic templates, assembly videos and instructions on our website.



Value Tear Drop Sail Signs

Description	Item #	1	2-5	6-11	12-24	Item #	1	2-5	6-11	12-24
6.5' Kit w/Cross Base	191611	144.00	139.68	132.48	128.16	191613	212.80	210.14	195.32	192.76
9.5' Kit w/Cross Base	191619	163.80	158.85	150.66	145.80	191621	248.90	241.40	228.95	221.54
13' Kit w/Cross Base	191627	215.65	209.19	198.36	192.00	191629	324.90	315.12	298.87	289.18
Kit Includes: Hardware w/Cross Base, Water Ballast, Banner and Carry Case										(C)

Kit Includes: Hardware w/Cross Base, Water Ballast, Banner and Carry Case

(C)

Value Razor Sail Signs

Description	Item #	1	2-5	6-11	12-24	Item #	1	2-5	6-11	12-24
7.5' Kit w/Cross Base	191651	144.00	139.68	132.48	128.16	191653	209.76	203.41	192.92	186.67
10.5' Kit w/Cross Base	191659	163.80	158.85	150.66	145.80	191661	241.04	233.77	221.72	214.54
15' Kit w/Cross Base	191667	208.84	202.58	192.10	185.93	191669	324.90	315.12	298.87	289.18
Kit Includes: Hardware w/Cross Base, Water Ballast, Banner and Carry Case										(C)

Kit Includes: Hardware w/Cross Base, Water Ballast, Banner and Carry Case

(C)

Streamline Tear Drop Sail Signs

Description	Item #	1	2-5	6-11	12-24	Item #	1	2-5	6-11	12-24
6' Kit w/Three-Legged Scissor Base	191401	204.00	197.80	188.10	181.00	191409	282.00	272.80	260.10	251.00
8' Kit w/Scissor Base	191403	258.00	249.70	237.60	229.40	191411	348.00	337.70	324.60	314.40
11.5' Kit w/Scissor Base	191405	305.00	295.70	280.60	271.40	191413	432.00	418.70	397.60	384.40
15' Kit w/Scissor Base	191407	360.00	348.70	333.60	323.40	191415	520.00	503.70	483.60	468.40
Kit Includes: Hardware w/Scissor Base, Water Ballast, Banner and Carry Case										

Kit Includes: Hardware w/Scissor Base, Water Ballast, Banner and Carry Case

(C)

Streamline Razor Sail Signs

Description	Item #	1	2-5	6-11	12-24	Item #	1	2-5	6-11	12-24
7' Kit w/Three-Legged Scissor Base	191429	204.00	197.80	188.10	181.00	191437	282.00	272.80	260.10	251.00
9' Kit w/Scissor Base	191431	258.00	249.70	237.60	229.40	191439	348.00	337.70	324.60	314.40
13' Kit w/Scissor Base	191433	305.00	295.70	280.60	271.40	191441	432.00	418.70	397.60	384.40
17' Kit w/Scissor Base	191435	360.00	348.70	333.60	323.40	191443	520.00	503.70	483.60	468.40
Kit Includes: Hardware w/Scissor Base, Water Ballast, Banner and Carry Case										(C)

Kit Includes: Hardware w/Scissor Base, Water Ballast, Banner and Carry Case

(C)

Premium Tear Drop Sail Signs

Description	Item #	1	2-5	6-11	12-24	Item #	1	2-5	6-11	12-24
6' Kit w/Three-Legged Scissor Base	190979	229.00	221.80	211.10	204.00	190978	332.00	321.80	306.10	295.00
8' Kit w/Scissor Base	190763	283.00	274.70	260.60	251.40	190762	398.00	387.70	369.60	359.40
11.5' Kit w/Scissor Base	190765	330.00	319.70	303.60	293.40	190764	483.00	467.70	448.60	438.40
15' Kit w/Scissor Base	190767	385.00	373.70	358.60	348.40	190766	570.00	553.70	533.60	513.40
Kit Includes: Hardware w/Scissor Base, Water Ballast, Banner and Carry Case										(C)

Kit Includes: Hardware w/Scissor Base, Water Ballast, Banner and Carry Case

(C)

Premium Razor Sail Signs

Description	Item #	1	2-5	6-11	12-24	Item #	1	2-5	6-11	12-24
7' Kit w/Three-Legged Scissor Base	190985	229.00	221.80	211.10	204.00	190984	332.00	321.80	306.10	295.00
9' Kit w/Scissor Base	190757	283.00	274.70	260.60	251.40	190756	398.00	387.70	369.60	359.40
13' Kit w/Scissor Base	190759	330.00	319.70	303.60	293.40	190758	483.00	467.70	448.60	438.40
17' Kit w/Scissor Base	190761	385.00	373.70	358.60	348.40	190760	570.00	553.70	533.60	513.40
Kit Includes: Hardware w/Scissor Base, Water Ballast, Banner and Carry Case										

Kit Includes: Hardware w/Scissor Base, Water Ballast, Banner and Carry Case

(C)

Product Size
Sizes Vary

Finished Graphic Size
View Online Template

Production Lead Time: 4 days from final proof approval

Sail Sign Accessories

Item #	Description	1	2-5	6-11	12-24
190711	Heavy-Duty Cross Base	73.00	71.00	67.00	65.00
190719	3-Leg Folding Base	45.00	44.00	41.00	40.00
190706	Ground Spike	42.00	41.00	39.00	37.00
190718	Soft Ground Spike	47.00	46.00	43.00	42.00
190709	Vehicle Base	63.00	61.00	58.00	56.00
191590	Value Spike	30.00	29.10	27.60	26.70
191591	Value Cross Base	30.00	29.10	27.60	26.70
190710	Square Water Ballast	42.00	40.70	38.60	37.40
190708	Round Water Ballast	42.00	40.70	38.60	37.40
220082	Universal Product Case	107.00	104.00	101.00	99.00

*Covered by a 90-day product warranty

Hardware Lead Time: Ships same day when ordered before 2 PM CST



Universal Product Case with wheels
(Holds up to three sail signs)

Setup fee: \$25.00(G); no setup fee on orders placed via our website. View current graphic templates, assembly videos and instructions on our website.

TENTS & EVENT PRODUCTS

Be prepared for any type of event, whether outdoors or indoors, with a massive assortment of tents, inflatable displays, cooler covers, games and more.

Suggested Product Uses

- Car Shows
- Tailgating
- Fund Raisers
- Recruiting Events
- Company Parties
- Craft and Art Fairs



Standard 10' Tent with full-bleed dye sublimation, shown with (1) dye sublimated double-sided Full Wall (sold separately; see website)

STANDARD 10' TENT

This popular tent strikes a perfect balance between cost effectiveness and portability.

- Pebble powder-coated steel frame
- ABS nylon joints
- Crank-up canopy creates a taut, clean peak
- Stake kit and wheeled carry case included
- 24 & 48 Hour Quick Ship options available; see website for details

Standard 10' Tent

Item #	Description	1	2-5	6-11	12-24
240611	Full-Color Imprint Kit (1 Location)	505.00	488.00	471.00	454.00
240612	Full-Color Imprint Kit (2 Locations)	575.00	556.00	537.00	518.00
240614	Full-Color Imprint Kit (4 Locations)	715.00	692.00	669.00	646.00
240618	Full-Color Imprint Kit (8 Locations)	995.00	964.00	933.00	902.00
240619	Full-Bleed Dye Sublimation Kit	1115.00	1083.00	1052.00	1020.00

(C)

Product Size	Imprint Graphic Size	Full-Bleed Finished Graphic Size
118.5"W x 127.5"H -140"H x 118.5"D	Peak: 44"W x 24"H; Valance: 60"W x 8"H	View Online Template

Production Lead Time: 4-7 days from final proof approval



Easy-Glide Tent Feet allow the tent frame to slide on dirt and grass, preventing the legs from catching. Patent #D760857



Legs feature plastic push buttons for pinch-free height adjustments.

CANOPY COLORS



PMS colors are for reference only and may vary slightly from actual color.



Deluxe 8' Tent with full-bleed dye sublimation

DELUXE 8' TENT

8' tents are compact enough for use indoors or in tight spaces.

- Pebble powder-coated steel frame
- ABS glass-filled nylon joints
- Crank-up canopy creates a taut, clean peak
- Stake kit and wheeled carry case included

Deluxe 8' Tent

Item #	Description	1	2-5	6-11	12-24
240821	Full-Color Imprint Kit (1 Location)	565.00	553.00	541.00	524.00
240822	Full-Color Imprint Kit (2 Locations)	635.00	621.00	607.00	588.00
240824	Full-Color Imprint Kit (4 Locations)	775.00	757.00	739.00	716.00
240828	Full-Color Imprint Kit (8 Locations)	1055.00	1029.00	1003.00	972.00
240829	Full-Bleed Dye Sublimation Kit	1165.00	1139.00	1113.00	1082.00

(C)

Product Size	Imprint Graphic Size	Full-Bleed Finished Graphic Size
96"W x 117.5"H -130"H x 96"D	Peak: 36"W x 28"H; Valance: 50"W x 8"H	View Online Template

Production Lead Time: 4-7 days from final proof approval



Legs feature levers for easy height adjustments.



Easy-Glide Tent Feet allow the tent frame to slide on dirt and grass, preventing the legs from catching. Patent #D760857

CANOPY COLORS



PMS colors are for reference only and may vary slightly from actual color.

Setup fee: \$25.00(G); no setup fee on orders placed via our website. View current graphic templates, assembly videos and instructions on our website.



PREMIUM 10' & 20' TENTS

These Premium tents features a strong aluminum frame with sturdy hexagon-shaped legs, and the hardware is backed by a five-year warranty.

- 0.8 mm anodized aluminum frame
- ABS glass-filled nylon joints
- Hexagon legs for strength
- Crank-up canopy creates a taut, clean peak
- Stake kit and wheeled carry case included
- 24 & 48 Hour Quick Ship options available for 10' tents; see website for details

Premium 10' Tent

Item #	Description	1	2-5	6-11	12-24
240631	Full-Color Imprint Kit (1 Location)	715.00	698.00	681.00	664.00
240632	Full-Color Imprint Kit (2 Locations)	785.00	766.00	747.00	728.00
240634	Full-Color Imprint Kit (4 Locations)	925.00	902.00	879.00	856.00
240638	Full-Color Imprint Kit (8 Locations)	1205.00	1174.00	1143.00	1112.00
240639	Full-Bleed Dye Sublimation Kit	1325.00	1293.00	1262.00	1230.00

(C)

Premium 10' x 20' Tent

Item #	Description	1	2-5	6-11	12-24
240571	Full-Color Imprint Kit (1 Location)	920.00	903.00	881.00	854.00
240572	Full-Color Imprint Kit (2 Locations)	990.00	971.00	947.00	918.00
240574	Full-Color Imprint Kit (4 Locations)	1130.00	1107.00	1079.00	1046.00
240578	Full-Color Imprint Kit (8 Locations)	1410.00	1379.00	1343.00	1302.00
240582	Full-Color Imprint Kit (12 Locations)	1690.00	1651.00	1607.00	1558.00
240583	Full-Bleed Dye Sublimation Kit	1940.00	1900.00	1860.00	1805.00

(C)

Description	Product Size	Imprint Graphic Size	Full-Bleed Finished Graphic Size
Premium 10' Tent	118"W x 126.75"-139.25"H x 118"D	Peak: 44"W x 24"H; Valance: 60"W x 8"H	View Online Template
Premium 20' Tent	234.5"W x 126.75"-139.25"H x 118.25"D	Peak: 44"W x 24"H; Valance: 60"W x 8"H	View Online Template

Production Lead Time: 4-7 days from final proof approval



Premium 20' Tent with full-bleed dye sublimation

Premium 10' Tent with full-color imprint (8 locations)

10' X 10' CANOPY COLORS



White Navy Blue PMS 2767 Royal Blue PMS 2728 Green PMS 347 Black Red PMS 1795 Orange PMS 804 Yellow PMS 102

PMS colors are for reference only and may vary slightly from actual color.
20' canopy available in white or with full-bleed dye sublimation



Easy-Glide Tent Feet allow the tent frame to slide on dirt and grass, preventing the legs from catching. Patent #D760857



Legs feature levers for easy height adjustments.

EVENT TENT SETUP FEATURES



Sets up in minutes.



Adjust tent height with the push of a button.



Crank-up canopy creates a taut, clean peak.



Secure tent to ground with Tent Stake Kit.



Collapses easily to store in soft case with wheels.



Patent #D760857

Easy-Glide Tent Feet for mobility.

Setup fee: \$25.00(G); no setup fee on orders placed via our website. View current graphic templates, assembly videos and instructions on our website.



Geodesic Air Display shown with super poly knit flag canopy



Heavy-duty vinyl bag included to keep the display protected between events.



Bungee cords attach to the inflatable structure, keeping the canopy taut.



KIT INCLUDES:



Electric Air Pump



Rope and Stakes

GEODESIC AIR DISPLAY

This innovative take on event tents offers massive branding opportunities at outdoor events.

- Graphics are dye sublimated on 400 denier polyester or super poly knit flag fabric
- Inflates in less than four minutes with the included air pump
- Remains stable without a continuously running blower
- Not recommended for use in below-freezing temperatures

Geodesic Air Display

Item #	Description	1	2-5	6-11	12-24
211150	Kit with 400 Denier Polyester Canopy	2900.00	2840.00	2785.00	2695.00
211151	Kit with Super Poly Knit Flag Canopy	2900.00	2840.00	2785.00	2695.00

Kit Includes: Inflatable Structure, Imprinted Canopy, Electric Air Pump, Stakes, Rope, Bungees and Vinyl Bag (C)

Product Size	Circumference	Finished Graphic Size
142"W x 109.75"H x 118.75"D	27.5"	View Online Template

Production Lead Time: 7 days from final proof approval



Jumbo Arch Display

Arch Display



Use the attached rings to secure the arch with heavy-duty stakes and rope.



Graphics attach using hook-and-loop fasteners, letting you swap out messages with ease.

ARCH INFLATABLE DISPLAYS

Create a grand entrance with inflatable archways.

- PVC-coated nylon material is lightweight, water-resistant and tear-resistant
- Graphics are dye sublimated on 400 denier polyester
- Inflates in under a minute

Arch Inflatable Displays

Item #	Description	1	2-5	6-11	12-24
211052	Arch Only Kit (No Graphics)	1600.00	1570.00	1520.00	1490.00
211051	Arch with Graphics Kit	2200.00	2155.00	2090.00	2045.00
211062	Jumbo Arch Only Kit (No Graphics)	1800.00	1765.00	1710.00	1675.00
211061	Jumbo Arch with Graphics Kit	2400.00	2350.00	2280.00	2230.00

Kit Includes: Inflatable Structure, (2) Side Graphics, (1) Top Graphic, Electric Blower, Stakes, Rope and Carry Case (C)

Description	Product Size with Tube and Electric Blower	Circumference	Finished Graphic Size
Arch	235"W x 120.5"H x 26.5"D	86"	View Online Template
Jumbo Arch	242"W x 162"H x 103"D	116"	View Online Template

Production Lead Time: 7 days from final proof approval

Arch Colors: Black, Blue-PMS 7686, Gray-PMS 423, Red-PMS 200

KIT INCLUDES:



4 amp Continuous Blower



Rope & 18" Heavy-Duty Stake Kit

Setup fee: \$25.00(G); no setup fee on orders placed via our website. View current graphic templates, assembly videos and instructions on our website.

SPIN 'N WIN PRIZE WHEEL

Give your next trade show or event a creative spin.

- Twelve prize slots and center plate are customizable and interchangeable
- A plastic clicker makes a ticking sound as the wheel spins
- Powder-coated steel legs

Spin 'N Win Prize Wheel

Item #	Description	1	2-5	6-11	12-24
280104	Kit	525.00	520.00	515.00	510.00
Kit Includes: Hardware, Graphics and Carry Case					(C)

Product Size
31.25"W x 40.75"H - 72"H x 16"-31"D

Finished Graphic Size
View Online Template

Production Lead Time: 2 days from final proof approval



Prize wheel can be used on tabletops, and extendable legs let you use it as a standalone display.



Prize cards and center plate graphic can be printed using a desktop printer.



Adjustable Product Height: 40.75" - 72"H

FOUR SEASON EVENT COOLER

Keep a large amount of beverages cool while displaying your brand or favorite sports team.

- Can be used indoors or outdoors
- Molded insulation and a tinted lid keep contents cold
- Graphic available on no curl hybrid film or Rappz™ neoprene
- Holds up to 40 lbs. of ice and 48 standard 12 oz. cans

Four Season Event Cooler

Item #	Description	1	2-5	6-11	12-24
280220	No Curl Hybrid Film Kit	375.00	368.00	364.00	356.00
280222	Rappz™ Kit	415.00	407.00	403.00	394.00
Kit Includes: Hardware and Graphic					(C)

Product Size
22.125"W x 35"H x 25.125"D

Finished Graphic Size
View Online Template

Production Lead Time: 4-5 days from final proof approval



Single pivot lid can be opened and closed with one hand.



Two wheels and molded handles for mobility.



With no curl hybrid film graphic

With Rappz™ graphic



Customize your cooler to promote your brand, display colorful artwork or show off your team spirit.

- Kits include cooler and cooler cover
- Form-fitting neoprene covers are dye sublimated
- Covers fit Coleman® coolers and many similarly sized cooler brands

Rappz™ Cooler Cover Graphics

Item #	Description	1-2	3-5	6-11	12-24
210452	1/2 Gallon Jug Cooler Cover Graphics Kit	N/A	36.00	35.30	34.60
210455	5 Gallon Jug Cooler Cover Graphics Kit	N/A	90.00	88.20	86.40
210458	18 Quart Cooler Cover Graphics Kit	N/A	67.00	65.70	64.30
210470	40 Quart Wheeled Cooler Cover Graphics Kit	110.00	109.00	108.00	107.00
210461	48 Quart Cooler Cover Graphics Kit	88.00	87.00	86.00	85.00
210473	50 Quart Wheeled Cooler Cover Graphics Kit	130.00	129.00	128.00	127.00
210464	70 Quart Cooler Cover Graphics Kit	140.00	139.00	138.00	137.00
210467	100 Quart Cooler Cover Graphics Kit	168.00	167.00	166.00	165.00
Kit includes: Rappz™ and cooler					(C)

Product Size
Sizes Vary

Finished Graphic Size
View Online Templates

Production Lead Time: 5 days from final proof approval



Setup fee: \$25.00(G); no setup fee on orders placed via our website. View current graphic templates, assembly videos and instructions on our website.

SIGNAGE

From traditional A-frames to light boxes, our robust selection of indoor and outdoor displays gives you an enormous variety of options.

Suggested Product Uses

- Schools
- Open Houses
- Real Estate
- Theater Lobbies
- Festivals
- Sidewalk Sales



Shown in white with chalkboard insert

Shown in black with corrugated insert



Tabs keep sign securely in place.

SIGNICADE DELUXE

This A-frame is maintenance-free and weather-resistant, making it perfect for outdoor use.

- Frame can be filled with water or sand for stability
- Durable plastic construction prevents rust and splinters
- Folds flat for transport or storage
- Convenient molded handle

Signicade Deluxe A-Frame

Item #	Description	1	2-5	6-11	12-24
210121	Corrugated Single-Sided Kit	177.20	172.20	163.80	158.80
210122	Corrugated Double-Sided Kit	188.00	183.00	173.00	168.00
210280	Chalkboard Kit*	224.00	219.00	207.00	202.00

Kit Includes: Black or White Hardware and (2) Single- or Double-Sided Graphics (C)
*Chalkboard inserts are single-sided and unprinted

Product Size 27"W x 38.5"H x 19"D
Finished Graphic Size 24"W x 36"H

Production Lead Time: 3 days from final proof approval
Chalkboard Kit ships same day when order is placed by 2pm CST

Frame Colors ☒ Black ☐ White



Signs slide in and out for easy graphic changes.



Chalkboard insert now available, letting you display personalized, hand-written messages.



Double-sided kits can display up to four different messages (two at a time)

Simpo Sign II Double-Sided Kit

Simpo Square Sign Single-Sided Kit

SIMPO SIGNS

These A-frame signs are durable, weather-resistant and maintenance-free, packing all the best A-frame features into a single, compact unit.

- Durable plastic construction prevents rust and splinters
- Convenient molded handle
- Frame can be filled with water or sand for stability
- Available in white only

Simpo Signs

Item #	Description	1	2-5	6-11	12-24
210091	Simpo Sign II Single-Sided Kit	189.20	183.20	175.80	169.80
210092	Simpo Sign II Double-Sided Kit	198.00	192.00	183.00	177.00
210274	Simpo Square Sign Single-Sided Kit	101.60	100.00	96.10	93.80
210275	Simpo Square Sign Double-Sided Kit	109.40	107.80	103.50	101.20

Kit Includes: Hardware and (2) Single- or Double-Sided Graphics (C)

Description Product Size Finished Graphic Size
Simpo Sign II 24"W x 36.75"H x 21.5"D 22"W x 27"H
Simpo Square 22"W x 24.625"H x 21"D 20"W x 19"H

Production Lead Time: 3 days from final proof approval



Tabs keep sign securely in place.



Signs slide in and out for easy graphic changes.

Setup fee: \$25.00(G); no setup fee on orders placed via our website. View current graphic templates, assembly videos and instructions on our website.



LED LIGHT BOXES

LED light boxes offer a brighter and more energy-efficient alternative to traditional light box designs.

- Lightweight aluminum frame can be hung vertically or horizontally
- LED power lasts more than 50,000 hours

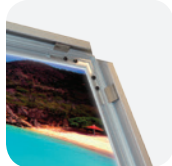
LED Light Boxes

Item #	Description	1	2-5	6-11	12-24
325031	23.5" x 17.5" Kit	280.00	275.00	270.00	265.00
325032	27.5" x 21.5" Kit	385.00	370.00	355.00	340.00
325033	35.5" x 23.5" Kit	545.00	530.00	520.00	500.00

Kits Include: Frame, Graphic, AC Adapter and Mounting Hardware (C)

Description	Product Size	Finished Graphic Size
23.5" x 17.5" LED Light Box	25.6" W x 19.6" H x .875" D	23.5" W x 17.5" H
27.5" x 21.5" LED Light Box	29.6" W x 23.6" H x .875" D	27.5" W x 21.5" H
35.5" x 23.5" LED Light Box	37.6" W x 25.6" H x .875" D	35.5" W x 23.5" H

Production Lead Time: 2 days from final proof approval



Edges flip open for easy graphic changes.



23.5" x 17.5"



27.5" x 21.5"



35.5" x 23.5"

RECTANGULAR SIGN DISPLAYS

These sign displays come in a variety of designs, allowing you to show off your message with style.

- Graphic is printed double-sided
- Steel hardware available in chrome or black (Express Display available in chrome only)

Rectangular Sign Displays

Item #	Description	1	2-5	6-11	12-24
400057	Single Sign Kit	150.00	146.00	142.00	138.00
400059	Triple Sign Kit	300.00	295.00	285.00	275.00
400055	Flat Base Sign Kit	145.00	140.00	135.00	125.00
400021	Express Sign Kit	120.00	116.00	111.00	107.00

Single, Flat Base & Express Sign Kits Include: Hardware and (1) Double-Sided Graphic
Triple Sign Kit includes: Hardware and (3) Double-Sided Graphics

Description	Product Size	Finished Graphic Size
Single Sign	23.25" W x 55.75" H x 15" D	22" W x 28" H
Triple Sign	25" W x 88.5" H x 25" D	22" W x 28" H each
Flat Base Sign	22.25" W x 59.75" H x 10" D	22" W x 28" H
Express Sign	15.25" W x 61.5" H x 12" D	14" W x 22" H

Production Lead Time: 3 days from final proof approval

Frame Colors* ☒ Black ☐ Chrome

*Express Display only available in chrome



Single Display with chrome hardware



Triple Display with black hardware



Flat Base Display with chrome hardware



Express Display with chrome hardware

Setup fee: \$25.00(G); no setup fee on orders placed via our website. View current graphic templates, assembly videos and instructions on our website.

EUROFIT FABRIC DISPLAYS

EuroFit displays weigh 75% less than standard pop-up displays.

- Double-sided dye-sublimated graphics on two-way stretch fabric
- Hinge together several separate EuroFit displays with the new EuroFit Connector
- Create modular layouts with limitless possibilities
- Carry case included
- More options available online

Suggested Product Uses

- Art Galleries
- Trade Shows
- Career Fairs
- Media Events
- Backdrops
- In-Store Displays



54"H EuroFit Straight Walls

Item #	Description	1	2-5	6-11	12-24
256200	2'W x 54"H Kit	175.00	170.00	164.00	160.00
256209	3'W x 54"H Kit	205.00	198.00	193.00	186.00
256218	4'W x 54"H Kit	245.00	238.00	230.00	223.00
256227	5'W x 54"H Kit	278.00	270.00	262.00	253.00
256236	8'W x 54"H Kit	405.00	392.00	381.00	368.00

Kit Includes: Hardware, Graphic, (1) EuroFit Connector and Carry Case (C)

72"H EuroFit Straight Walls

Item #	Description	1	2-5	6-11	12-24
256203	2'W x 72"H Kit	205.00	199.00	193.00	186.00
256212	3'W x 72"H Kit	250.00	240.00	230.00	217.00
256221	4'W x 72"H Kit	290.00	282.00	273.00	264.00
256230	5'W x 72"H Kit	340.00	330.00	320.00	310.00
256239	8'W x 72"H Kit	485.00	470.00	456.00	441.00

Kit Includes: Hardware, Graphic, (1) EuroFit Connector and Carry Case (C)

90"H EuroFit Straight Walls

Item #	Description	1	2-5	6-11	12-24
256206	2'W x 90"H Kit	220.00	213.00	207.00	200.00
256215	3'W x 90"H Kit	295.00	286.00	278.00	268.00
256244	4'W x 90"H Kit	350.00	345.00	335.00	325.00
256233	5'W x 90"H Kit	425.00	413.00	399.00	387.00
255180	8'W x 90"H Kit	875.00	860.00	835.00	810.00
256251	10'W x 90"H Kit	1185.00	1160.00	1125.00	1100.00

Kit Includes: Hardware, Graphic, (1) EuroFit Connector and Carry Case (C)

Product Size **Finished Graphic Size**
 Sizes Vary View Online Template

Production Lead Time: 4 days from final proof approval

Setup fee: \$25.00(G); no setup fee on orders placed via our website. View current graphic templates, assembly videos and instructions on our website.



EuroFit Arc Walls

Item #	Description	1	2-5	6-11	12-24
256270	2'W x 90"H Kit	220.00	213.00	207.00	200.00
256273	3'W x 90"H Kit	295.00	286.00	278.00	268.00
256276	4'W x 90"H Kit	385.00	374.00	362.00	351.00
256279	5'W x 90"H Kit	445.00	413.00	399.00	387.00
256282	8'W x 90"H Kit	575.00	558.00	541.00	524.00

Kit Includes: Hardware, Graphic, (1) EuroFit Connector and Carry Case (C)

Product Size Finished Graphic Size
Sizes Vary View Online Template

Production Lead Time: 4 days from final proof approval



EuroFit Incline Walls

Item #	Description	1	2-5	6-11	12-24
256320	2'W x 90"H Kit	220.00	213.00	207.00	200.00
256323	3'W x 90"H Kit	295.00	286.00	278.00	268.00
256326	4'W x 90"H Kit	385.00	374.00	362.00	351.00
256329	5'W x 90"H Kit	445.00	432.00	418.00	405.00
256332	8'W x 90"H Kit	575.00	558.00	541.00	524.00

Kit Includes: Hardware, Graphic, (1) EuroFit Connector and Carry Case (C)

Product Size Finished Graphic Size
Sizes Vary View Online Template

Production Lead Time: 4 days from final proof approval



EuroFit Angle

Item #	Description	1	2-5	6-11	12-24
255260	54"H 90° Kit	650.00	635.00	620.00	605.00
255263	72"H 90° Kit	810.00	795.00	770.00	755.00
255270	54"H 120° Kit	635.00	620.00	605.00	590.00
255273	72"H 120° Kit	793.25	779.00	755.25	741.00

Kit Includes: Hardware, Graphic, (1) EuroFit Connector and Carry Case (C)

Product Size Finished Graphic Size
Sizes Vary View Online Template

Production Lead Time: 4 days from final proof approval



EuroFit Bend

Item #	Description	1	2-5	6-11	12-24
255250	54"H Kit	350.00	342.00	330.00	322.00
255253	72"H Kit	375.00	370.00	355.00	350.00

Kit Includes: Hardware, Graphic, (1) EuroFit Connector and Carry Case (C)

Product Size Finished Graphic Size
Sizes Vary View Online Template

Production Lead Time: 4 days from final proof approval



EuroFit Bow

Item #	Description	1	2-5	6-11	12-24
255006	8' Kit	1120.00	1090.00	1060.00	1025.00
255009	10' Kit	1225.00	1195.00	1160.00	1125.00

Kit Includes: Hardware, Graphic, (1) EuroFit Connector and Carry Case (C)

Product Size Finished Graphic Size
Sizes Vary View Online Template

Production Lead Time: 4 days from final proof approval



EuroFit Cove

Item #	Description	1	2-5	6-11	12-24
255069	Cove Jr. Kit	1200.00	1175.00	1140.00	1115.00
255066	Cove Kit	1340.00	1315.00	1275.00	1245.00

Kit Includes: Hardware, Graphic, (1) EuroFit Connector and Carry Case (C)

Product Size Finished Graphic Size
Sizes Vary View Online Template

Production Lead Time: 4 days from final proof approval

EUROFIT FEATURE & BENEFITS



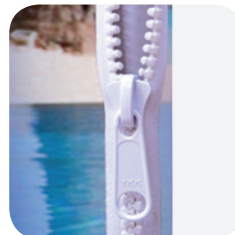
Joints are labeled for accurate step-by-step frame assembly.



Push-button connectors make it easy to assemble.



Two-way stretch fabric contours to the frame for a form-fitted look.



Select displays feature a heavy-duty zipper that secures the graphic.



Soft carry case included with all kits.



Displays can be hinged together using the EuroFit Connector.

Setup fee: \$25.00(G); no setup fee on orders placed via our website. [View current graphic templates, assembly videos and instructions on our website.](#)

FLOOR & TABLETOP DISPLAYS

Create professional presentations that you can take on the go. Choose from a wide selection of lightweight, portable displays, from traditional panel systems to fabric displays and more.

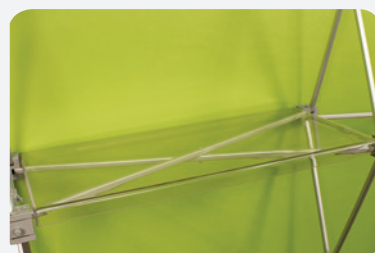
Suggested Product Uses

- Promo Events
- Hospitals
- Grocery Stores
- Trade Shows
- Presentations
- Business Lobbies



Kit 342000

OPTIONAL ADD-ON



Patent Pending

Deluxe GeoMetrix Internal Shelves

Item #	Description	1
338050	Internal Shelf	104.00
338068	Clear Internal Shelf	110.00
Shelves can hold up to 15 lbs.		(C)



Kit 342004



Kit 342010

DELUXE GEOMETRIX DISPLAYS

A strong, durable frame supports multiple banners and shelves so you have countless options for setting up a creative display.

- Setup and tear down can be done in seconds
- Graphics are dye sublimated on polyester double knit fabric
- Aluminum frame with nylon plastic hubs
- More options available online

Deluxe GeoMetrix Fabric Displays

Item #	Description	1	2-5	6-11	12-24
342000	Kit 342000	1365.00	1340.00	1315.00	1290.00
342004	Kit 342004	1155.00	1130.00	1105.00	1080.00
342010	Kit 342010	525.00	515.00	505.00	495.00
Kit Includes: Frame, Graphics, Shelf (Shelves) and Carry Case					
(C)					

Description	Product Size	Finished Graphic Size
Kit 342000	118"W x 89.5"H x 13"D	View Online Template
Kit 342004	90"W x 89.5"H x 13"D	View Online Template
Kit 342010	31.25"W x 89.5"H x 13"D	View Online Template

Production Lead Time: 4 days from final proof approval

Setup fee: \$25.00(G); no setup fee on orders placed via our website. View current graphic templates, assembly videos and instructions on our website.



KIT OPTIONS



Face Graphic Kit
Graphic only covers the front of the frame.



Wrap Graphic Kit
Graphic covers the front and two sides of the frame. Back of the frame is not covered.



10' display with face graphic



SPLASH DISPLAYS

This display is just as easy to set up as a traditional pop-up, but it's four times lighter.

- Graphics are dye sublimated on wrinkle-resistant polyester knit fabric
- Hook-and-loop fasteners make graphic installation simple
- Aluminum frame
- More options available online

Splash Straight Floor Displays

Item #	Description	1	2-5	6-11	12-24
341040	3' Face Graphic Kit	395.00	380.00	365.00	350.00
341041	3' Wrap Graphic Kit	475.00	460.00	445.00	430.00
341008	10' Face Graphic Kit	1175.00	1155.00	1135.00	1120.00
341009	10' Wrap Graphic Kit	1370.00	1350.00	1330.00	1315.00
341029	20' Wrap Graphic Kit	2160.00	2130.00	2100.00	2070.00

Kit Includes: Frame, Graphic and Carry Case(s)

Description	Product Size	Finished Graphic Size
3' Straight	31"W x 89.5"H x 12.25"D	View Online Template
10' Straight	119"W x 89.5"H x 12.25"D	View Online Template
20' Straight	237"W x 89.5"H x 12.25"D	View Online Template

Production Lead Time: 4 days from final proof approval



3' display with wrap graphic



20' display with wrap graphic

Setup fee: \$25.00(G); no setup fee on orders placed via our website. View current graphic templates, assembly videos and instructions on our website.



DELUXE EXHIBITOR EXPANDING DISPLAYS

These displays feature adjustable frames that can showcase a variety of banner sizes.

- Vertical and horizontal telescoping poles accommodate various graphic sizes
- Graphics are dye sublimated on polyester knit fabric
- 3" pole pockets keep banner in place
- More options available online
- Custom graphic sizes available (call for quote)

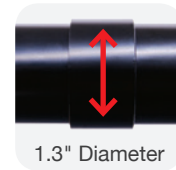
Deluxe Exhibitor Expanding Displays

Item #	Description	1	2-5	6-11	12-24
254140	6' Kit	525.00	505.00	485.00	465.00
254142	10' Kit	735.00	715.00	695.00	675.00

Kit Includes: Hardware, Graphic and Carry Case

Description	Product Size	Finished Graphic Size
6' Deluxe	69"W x 98"H x 16.5"D	63"W x 95"H
10' Deluxe	117"W x 98"H x 16.5"D	111"W x 95"H

Production Lead Time: 4 days from final proof approval



The Deluxe Exhibitor features a more durable construction for strength and stability.



SHOW 'N RISE POP-UP DISPLAYS

This best-selling pop-up display is perfect for use at multiple events.

- Choose between Velcro®-receptive fabric or laminated no curl mural panels
- LED lights included
- Case-to-Counter Conversion Kit included
- Two-year hardware warranty
- More sizes available online

10' Show 'N Rise Curved Floor Display

Item #	Description	1	2-5	6-11	12-24
339011	Full Mural Panel Kit	2142.00	2091.00	2040.00	1989.00

Kit Includes: Frame & Magnet Rails, Mural Center & End Panels, Graphic Case-to-Counter Conversion Kit, Double LED Light Kit, and Display Hard Case w/Wheels

Product Size	Finished Graphic Size
119"W x 92"H x 36"D	View Online Template

Production Lead Time: 3 days from final proof approval



High-grade aluminum frame with bayonet locking system keeps the display stable.



Shock cord magnet rails hold panels in place.



FAST TRAK DISPLAYS

Create an eye-catching presentation with these popular, lightweight displays.

- Can be used double-sided
- Velcro®-receptive fabric
- Seamless design with hidden double-acting hinges
- Easy clip-on header
- More sizes available online

Fast Trak

Item #	Description	1	2-5	6-11	12-24
146015	6' Display with Full Graphics	595.00	555.00	515.00	475.00
Kit Includes: Display, Graphic Header, (3) Graphic Panels and Carry Case					(C)

Product Size	Panel Graphic Size	Header Size	Header Graphic Size
72"W x 48"H x 22"D	23"W x 34.75"H	24"W x 12"H	22.75"W x 10.75"H

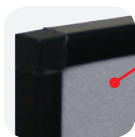
Production Lead Time: 3 days from final proof approval

Fabric Colors

Black Blue-PMS 287 Gray-PMS 430



Velcro®-receptive fabric makes graphic changes quick and easy.



Plastic frame has square corners.



Display on a 6' Standard Throw with full-color imprint

MICRO GEOMETRIX DISPLAYS

Create a variety of multi-dimensional displays in seconds.

- Lightweight aluminum-constructed frame
- Polyester double knit fabric
- Dye sublimation produces vibrant, full-color graphics
- More kits available online

Micro GeoMetrix

Item #	Description	1	2-5	6-11	12-24
337211	Kit 337211	455.00	450.00	445.00	435.00
Kit Includes: 12-Quad Horizontal Frame, (8) Graphic Banners and Carry Case					(C)

Product Size	Finished Graphic Size
60.75"W x 46.75"H x 9.62"D	View Online Template

Production Lead Time: 4 days from final proof approval



OPTIONAL ADD-ON

Micro GeoMetrix Shelf

Item #	Description	1
338069	Straight Internal Clear Shelf	32.00
Each shelf can hold up to 5 lbs. Compatible with frames equipped with locking arms only.		(C)



Kit with (2) shelves (sold separately) on a 6' Standard Throw and 57" dye-sublimated Accent Runner

Setup fee: \$25.00(G); no setup fee on orders placed via our website. View current graphic templates, assembly videos and instructions on our website.

ACCESSORIES

From easels to display lights to carry cases, we've got the accessories you need to complete your showroom.

Suggested Product Uses

- Trade Shows
- Entryways
- Hospitals
- Schools
- Job Fairs
- In-Store Promotions



TABLET STANDS

Turn your tablet into a marketing kiosk with these stylish stands.

- Metal holder adjusts diagonally, creating a secure grip on the corners of your tablet
- Fits tablets from 9.7" to 12.9" (measured diagonally)
- 59" cable lock included
- Tablet not included

Tablet Stands

Item #	Description	1	2-5	6-11	12-24
230033	EuroFit Tablet Stand Kit	415.00	405.00	395.00	380.00
230030	EuroFit Tablet and Literature Display Kit	415.00	405.00	395.00	380.00
230036	Sail Tablet Stand Kit	275.00	265.00	260.00	255.00
230050	Tall Sail Tablet Stand Kit	300.00	295.00	285.00	280.00

Kit Includes: Hardware, Graphic and Carry Case

Description	Product Size	Finished Graphic Size
EuroFit Tablet	17.875"W x 50.875"H x 19.375"D	View Online Template
EuroFit Tablet and Literature Display	14.375"W x 51.75"H x 17.5"D	View Online Template
Sail Tablet Stand	10"W x 43.875"H x 22"D	View Online Template
Tall Sail Tablet Stand	10"W x 57"H x 19"D	View Online Template

Production Lead Time: 4 days from final proof approval



EASELS

Display announcements, artwork, sign frames, light boxes and more with these versatile and durable easels.

- Extendable legs allow for use as a table display or standalone floor display
- Tripod structure for easy placement in corners
- Each easel holds up to 20 lbs.

Easels

Item #	Description	1	2-5	6-11	12-24
400011	Presto Easel	55.00	53.00	49.00	47.00
400052	Jumbo Easel	88.00	84.00	79.00	71.00

Description	Product Size
Presto Easel	38"W x 20"-63.625"H x 32"D
Jumbo Easel	20"W x 24"-72"H x 16"D

Hardware Lead Time: Ships same day when ordered before 2 PM CST

CLEAR VIEW LITERATURE DISPLAY

Your literature can be prominently displayed on the show floor and neatly organized in a compact space when in storage.

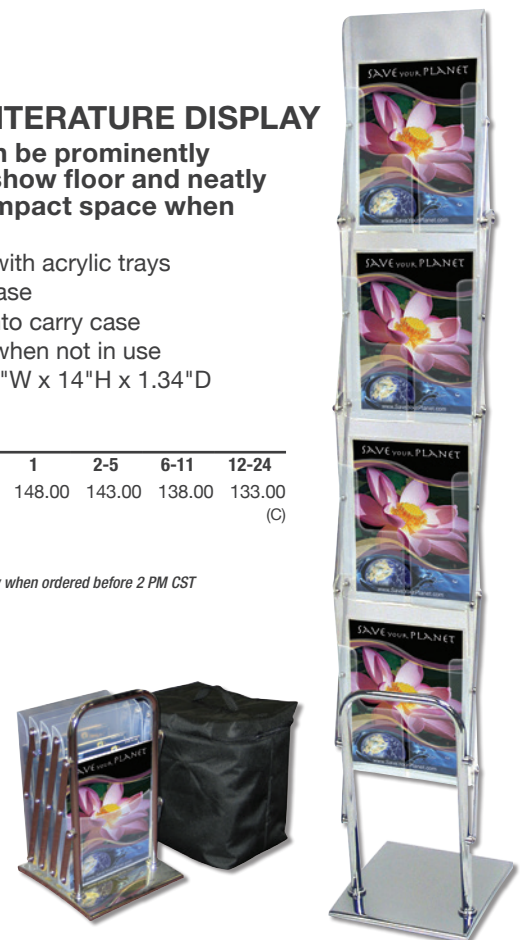
- Four-tier design with acrylic trays
- Sturdy chrome base
- Collapses to fit into carry case
- Stores literature when not in use
- Pocket size: 9.25"W x 14"H x 1.34"D

Clear View Display

Item #	Description	1	2-5	6-11	12-24
230003	Clear View Display	148.00	143.00	138.00	133.00

Product Size
10"W x 60.75"H x 11"D

Hardware Lead Time: Ships same day when ordered before 2 PM CST





SHOWGOER PORTABLE TABLES

Never rent again! With these portable tables, you can plan ahead and avoid the cost of on-site rentals.

- Durable steel frame
- Molded plastic top
- Three portable designs to choose from

6' ShowGoer Folding Table

Item #	Description	1	2-5	6-11	12-24
280007	6' Folding Table	128.00	125.00	122.00	118.00

Product Size
72"W x 28.75"H x 29.75"D

Hardware Lead Time: Ships same day when ordered before 2 PM CST



Table Throw Soft Carry Case

- Best for unprinted or full-color printed rolled fabric table throws



Round Hard Case with Wheels

- Use with many of our banner and retractable banner displays

CARRY CASES

Our broad selection of cases helps you protect your investment by making transportation and storage simple.

- Soft carry cases feature 600 denier polyester fabric with straps
- Hard carry cases feature easy grip handles or straps
- Cases can ship via UPS, FedEx, airline or motor freight (with proper packaging)
- Color of soft carry cases may vary

Carry Cases

Item #	Description	1	2-5	6-11	12-24
220009G	Table Throw Soft Carry Case	31.00	30.00	29.00	28.00
220024	Round Hard Case with Wheels	235.00	230.00	225.00	220.00

Description Product Size
Soft Carry Case 38"W x 5"H x 5"D
Hard Carry Case 15"W x 42"H x 18.5"D

Hardware Lead Time: Ships same day when ordered before 2 PM CST



SHOWGOER CASE-TO-PODIUM

Take your display on the go. This podium converts into a wheeled case for simple, worry-free transportation.

- Dye-sublimated wrap slides on for easy setup
- Durable, roto-molded case
- Removable top and built-in tray for quick access to your show materials

ShowGoer Case-to-Podium

Item #	Description	1	2-5	6-11	12-24
257030	Kit	475.00	465.00	455.00	445.00

Kit Includes: Hardware and Graphic Wrap

Product Size Finished Graphic Size
38.375"W x 34.875"H x 16.875"D 99.5"W x 35"H

Production Lead Time: 4 days from final proof approval



Holds up to three 24"-33.5" Economy Retractors.



Wheels and pull-up handle make transport easy.



Ultimate LED Double Light Kit

- Attaches with a universal light clip to fit our full line of pop-up displays
- USB compatible



Ultimate LED Single Light Kit

- Optimized for retractors
- Attaches with a universal light clip to our full line of pop-up displays
- USB compatible



Universal Pop-Up Display Light

- Attaches directly to light clips on our full line of pop-up displays

LED LIGHTS

LED Light Kits

Item #	Description	1	2-5	6-11	12-24
150100	Universal Pop-Up Display Double Light Kit	265.00	257.00	246.00	239.00
150121	Ultimate LED Double Light Kit	240.00	235.00	230.00	220.00
150120	Ultimate LED Single Light Kit	125.00	121.00	116.00	113.00

Hardware Lead Time: Ships same day when ordered before 2 PM CST



**TABLE
COVERS**
page 2



**RETRACTABLE
BANNERS**
page 6



BANNER DISPLAYS
page 10



**BANNERS
& FLAGS**
page 12



**TENT & EVENT
PRODUCTS**
page 18



SIGNAGE
page 22



**FLOOR &
TABLETOP
DISPLAYS**
page 24



ACCESSORIES
page 30

WE'VE ADDED MORE THAN 50 NEW PRODUCTS THIS YEAR!

VISIT OUR WEBSITE AT
WWW.SHOWDOWNDISPLAYS.COM
TO SEE THEM ALL!



NEED IT FAST?

Sometimes regular shipping isn't fast enough. We understand.



Select products ship
in just 24 or 48 hours.

View website to order and
for complete Quick Ship
program requirements
and ordering information.

Distributed by:

Valid through December 31, 2017

Event Tents

connecting business professionals



Sail Signs

Table Throws

Splash